



Clinch Memorial  
**HOSPITAL**

## **2024 Annual Report**

*Clinch Memorial Hospital: A Year of  
Embracing New Beginnings, Enhancing Care, and Strengthening our Community*



## Dear Friends,

As the newly appointed Chair of the Clinch County Hospital Authority, it is my honor to address you in this year's Annual Report. I am deeply humbled to follow in the footsteps of Dr. Ellice Martin, whose dedication and leadership have left an indelible mark on Clinch Memorial Hospital and our community. We remember Dr. Martin with great respect and gratitude for her unwavering commitment to our hospital and the well-being of Clinch County. As Chair of the Clinch County Hospital

Authority, I am speaking to you on behalf of the Hospital Authority members who have been appointed by the Clinch County Board of Commissioners to oversee the workings of Clinch Memorial Hospital (CMH). I serve with Louis Cassotta, Beth Jones, Kaye Riley, Courtney Tolle, and Stephen Bush.

The past year has been one of significant achievements and challenges for Clinch Memorial Hospital. Despite the hurdles, our hospital has continued to thrive, thanks to the relentless efforts of our staff, the support of our community, and the strategic guidance of our board members. Here are some of the highlights and successes we are proud to share:

- Clinch Memorial Hospital has contributed nearly \$20 million to our local economy, creating numerous jobs and supporting local businesses.
- Our hospital remains a vital source of employment, with 175 direct jobs and 245 indirectly created positions, underscoring our role as an economic cornerstone in Clinch County.
- Our retail pharmacy continues to thrive, offering convenient prescription services and supporting our hospital financially.

- Our staff has actively participated in community events, from the School Supply giveaway to Hands on Homerville, demonstrating our commitment to being more than just a healthcare provider.
- The Clinch Memorial Foundation has had another successful year raising funds for new technology and equipment, enhancing the quality of care we provide.
- The establishment of the Patient Healing Garden has provided a serene environment for physical and occupational therapy, promoting recovery in a natural setting.
- Our participation in the Kids Alliance for Better Care has significantly improved pediatric emergency care, ensuring that our youngest patients receive the best possible treatment close to home.

As we move forward, we remain committed to our mission of providing high-quality, compassionate healthcare to all residents of Clinch County. We will continue to innovate, expand our services, and engage with our community to ensure that Clinch Memorial Hospital remains a trusted and essential part of your lives.

Thank you for your unwavering support and trust in Clinch Memorial Hospital. Together, we will continue to build a healthier and stronger community.

Warm regards,

Kay Hinson Chair, Clinch County Hospital Authority



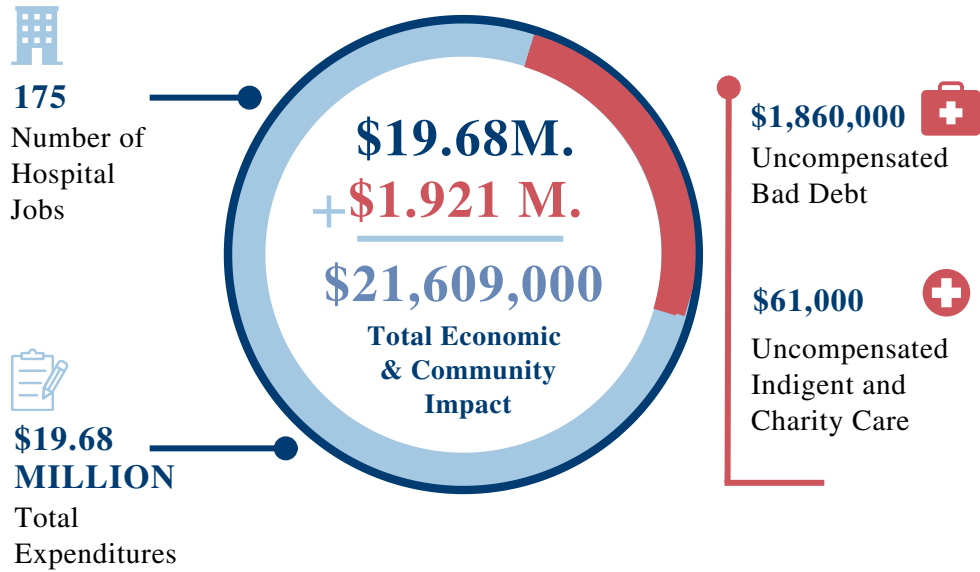


# 2024 Clinch Memorials positive impact on the ECONOMY & COMMUNITY

This data is from Fiscal Year 2024 (July 2023-June 2024)

# 2024 Clinch Memorials positive impact on the ECONOMY & COMMUNITY

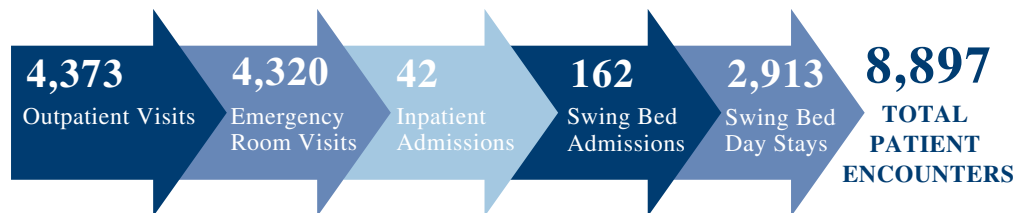
This data is from Fiscal Year 2024 (July 2023-June 2024)



- Clinch Memorial's Economic Impact
- Clinch Memorial's Community Impact

Economic Impact totals based on Georgia Hospital Association formula.

### Clinch Memorial's Impact on Health Care in the Community



## Our Staff

**89**  
Employees Who Reside in Clinch County

**175**  
Total Employees

**245**  
Jobs Indirectly Created by Clinch Memorial Hospital  
Source: Georgia Hospital Association 2021 Economic Impact

## Clinch Memorial Hospital

**ABOUT US**

### Our Vision

Inspire Hope, Invest in Others, Promote Wellness

### Our Mission

Integrity and Excellence always

### Our Values

Compassion, Curiosity, Collaboration



## Respiratory Services (912) 470-2536

*Therapies: oxygen, aerosol and nebulizer, Incentive Spirometry, Chest Physiotherapy, Airway Suctioning. Testing: Pulmonary Function Testing, Methacholine Challenge Testing, Holter Monitor, Arteriel Blood Gas Analysis, Sleep Study*

## Emergency Services (912) 470-2521

*The Emergency Room is for those with serious problems of an urgent nature. The Emergency Room is staffed by full-time providers who provide 24-hour care, seven days a week.*

## Laboratory Services (912) 470-2542

*Bacteriology, Clinical Chemistry and Immunology, Hematology, Immunohematology, Mycology I, Parasitology, Therapeutic Drug Testing, Transfusion Services, Toxicology, Urinalysis*

## Gastroenterology (912) 487-0965

*In addition to early detection of colorectal cancer and polyps, our GI experts provide testings, such as colonoscopy, evaluation, and treatment of many common digestive disorders including, but not limited to: Irritable Bowel Syndrome (IBS), Barrett's esophagus, Constipation, Hepatitis, Crohn's disease, Gallstones, and more.*

## Outpatient Rehabilitation (912) 470-2517

*The recent partnership with BenCura Rehabilitation Services allows Clinch Memorial to offer occupational and speech therapies, in addition to physical therapy, five days a week. The highly trained team of therapists focus on restoring your strength, range of motion, and functional ambulation while managing your pain through state of the art treatment methods.*

## Radiology Services (912) 470-2594

*The Radiology Department provides Quality Medical Imaging services in a professional and timely manner. Services provided include Diagnostic Radiographic Exams (X-Rays), Computed Tomography (CT), Mammography and Ultrasonography.*

## Swing Bed Services (912) 470-2522

*Swing Bed helps patients transition from hospital to home with Physical Therapy and other skilled nursing services in a caring and comfortable environment. These services may be an appropriate option for after orthopedic surgery, trauma-related injury, stroke or brain injury, infection or disease requiring IV antibiotics, difficult wound healing, cardiac conditioning, and more. Our team meets regularly with the patient and their family to review progress and work towards the best outcome for the patient.*

## Dietary Our Daily Bread Cafe (912) 470-2598

*Clinch Memorial Hospital Dietary Service is dedicated to providing our patients with nutritious and delicious meals. We are also open to the public for breakfast and lunch every Monday through Friday. We have made-to-order menu options, our daily specials, and curbside pick up!*

## Pulmonary Rehabilitation (912) 470-2386

*Pulmonary Rehabilitation is for patients suffering from COPD or other lung problems who have difficulties performing daily tasks. Our team provides a comprehensive treatment plan using therapeutic therapy tailored to each patient. This supervised treatment plan helps ease the burden on your lungs. If you are interested in participating in these services, speak to your provider to receive a physician's request for these services.*

## Clinch Cancer Care (912) 470-2410

*A cancer diagnosis can be overwhelming. Between the cost of treatment and everyday living expenses, it can be difficult to stay afloat. Clinch Cancer Care is on a mission to alleviate patients from this financial burden. The program is designed to provide support to help meet basic needs and allow cancer patients in active treatment to focus on healing. A completed application and proof of treatment/diagnosis is required to receive funding.*

# Community Providers

Clinch Memorial Hospital values all physician and health care provider contributions to the health and well-being for the Clinch Community. Dr. Igor Ancor, Dr. Daniel Messcher, Dr. Sam Cobarrubias, and Dr. Charles Semones have primary care practices in Homerville and all have hospital admitting privileges at Clinch Memorial. These providers meet monthly at a medical staff meeting to address hospital policy and work together as a team to meet the health needs of the community.



**Dr. Igor Ancor,**  
Chief Medical  
Officer



**Dr. Sam Cobarrubias**



**Dr. Daniel Messcher**



**Dr. Charles Semones**



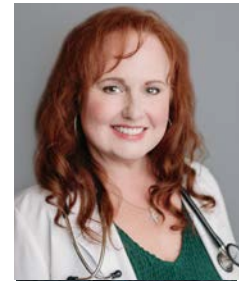
*At Clinch Memorial Family Practice, our mission is to provide high-quality, compassionate medical care to our patients and their families. We value the concept of family medicine, a board-certified specialty which serves the physical, mental, and emotional health of the whole family. Clinch Memorial Family Practice is available for all your primary healthcare needs.*



**Dr. Igor Ancor**



**Dr. Daniel Messcher**



**Heather Minshew,**  
Family Nurse Practitioner

## PRIMARY CARE

Chronic Care | Preventative Medicine | Vaccines | Annual Visits | Labs | Nutrition | Sick Visits | Non-Emergency Care Visits | Health Education | DOT Physical/Drug Screening | Weight Loss Management | Telehealth

## MASSAGE THERAPY

Deep Tissue | Neuromuscular | Pregnancy | Relaxation | Cupping

## FARGO CLINIC

Open every Tuesday and Wednesday from 8:00 AM - 5:00 PM. Clinch Memorial Pharmacy provides FREE medication deliveries weekly to Fargo residents.

## HOURS

Monday - Wednesday:  
8:00 AM - 5:00 PM  
Thursday: 8:00 AM - 7:00 PM  
Friday: 8:00 AM - 1:00 PM

## CONTACT US

(912) 470-2273 (CARE)!  
80 Huxford Street  
Homerville, GA 31634  
[www.clinchfamilypractice.org](http://www.clinchfamilypractice.org)



## 2024 Clinch Memorial Hospital Employee Honors: Executive of the Year and Chief Nursing Officer of the Year



### CEO, Angela Handley, named as Executive of the Year

At Help of Healthcare Professionals' Annual Mary Jane Seacole Awards Ceremony, Angela Handley, Chief Executive Officer (CEO) at Clinch Memorial Hospital, was announced as the 2024 Healthcare Executive of the Year. The prestigious event recognizes more than 20 honorees and their outstanding contributions to healthcare and their community.

Clinch Memorial Hospital is beyond proud of Angela Handley's leadership within our hospital! Thank you Help for Healthcare Professionals, Inc for highlighting her accomplishments and honoring her with this award!

### CNO, Kellie Register, named as Chief Nursing Officer of the Year

Kellie Register was selected by HomeTown Health, LLC as the recipient of the 2024 Nurse Executive of the Year award at the HomeTown Health 25th Annual Fall Conference held at Callaway Gardens in Pine Mountain, Georgia, October 16-18, 2024.

In testimonials received alongside her nominations, from among her co-workers at Clinch: we have witnessed firsthand the extraordinary combination of clinical expertise, leadership qualities, and selflessness that she brings to her work. The love and passion she exuberates is second to none. Her contributions to our team have been invaluable, and I believe she embodies all the qualities worthy of CNO of the Year. She possesses a deep understanding of both nursing practice and the broader aspects of healthcare administration. Her comprehensive knowledge of business workflows has been instrumental in streamlining processes and improving overall efficiency within our nursing department. The Nurse Leader of the Year award is presented each year by HomeTown Health to a Chief Nursing Officer who positively influences the delivery of rural health care in Georgia through their leadership at their facility – working to integrate the challenges of technological improvements, electronic systems, quality patient care, staff education and effective leadership, as well as the priority of compassionate and appropriate treatment for patients. Clinch Memorial Hospital is beyond grateful and proud to have Kellie on our team!



Shop at our Clinch Memorial Pharmacy Gift Shop! The Pharmacy Gift Shop is stocked with gift items curated by Pam Williams, Melinda Davis, and Kelly Griffis!

## CLINCH MEMORIAL PHARMACY

The Clinch Memorial Pharmacy is located inside of the hospital's facility and serves Clinch County and surrounding communities. Anyone can fulfill their prescriptions at Clinch Memorial Pharmacy, regardless of if they are a patient at Clinch Memorial Hospital or not.

Clinch Memorial Pharmacy benefits:

- FREE Delivery every Tuesday, Thursday, and Friday
- Discounts on Medications
- Quick Refills
- Curbside Pick Up

## BENEFITS

The pharmacy qualifies for the 340B Drug Pricing Program. This program requires drug manufacturers to sell outpatient drugs at a discount to safety-net providers, such as CMH. For example, the same 10 ml vial of insulin that normally sells for about \$350 costs just \$2 to \$25 through the 340b program at Clinch Memorial for qualifying patients. Clinch Memorial Pharmacy also provides Meds-to-Beds services, a free service that offers education about medication and delivers prescriptions to patients. Inpatients and Emergency Room patients have the convenience of receiving their prescriptions before they leave the hospital.



Clinch Memorial Hospital  
**PHARMACY**

*FILL YOUR PRESCRIPTIONS AT OUR  
RETAIL PHARMACY*

Monday - Friday: 8:00 AM - 6:00 PM

Saturday - 8:00 AM - 2:00 PM

(912) 470-2359

[www.clinchmh.org/pharmacy](http://www.clinchmh.org/pharmacy)



## Kids Alliance for Better Care Celebrates Clinch Memorial Hospital's Emergency Department as Part of the Pediatric Emergency Care Project

The Clinch Memorial Hospital Emergency Department was recognized for its commitment to strengthening pediatric emergency care in Clinch County during a July 20 ribbon-cutting ceremony. Clinch Memorial was celebrated for reaching key milestones as a participating hospital in the Kids Alliance for Better Care (KidsABC).

The alliance, established in 2023, is a collaboration between Mercer University School of Medicine (MUSM), its Georgia Rural Health Innovation Center (GRHIC) and Children's Healthcare of Atlanta (Children's).

"Clinch County has never had a pediatrician, and the nearest pediatric services are located 45 minutes away. This distance has posed significant challenges for the families in our community, who often lack the financial means or resources to access care so far from home," said Clinch Memorial CEO Angela Handley. "I am grateful that Clinch Memorial was selected to be part of KidsABC to give our hospital staff and community the confidence in our rural hospital to treat pediatric patients."

*Handley said, "KidsABC has truly revolutionized pediatric emergency care at Clinch Memorial Hospital. With KidsABC, we are now providing enhanced emergency care tailored to the unique needs of our youngest patients. This transformation has not only improved health outcomes for children but also brings peace of mind to parents who previously had to travel great distances for emergency care. This has had a profound impact on our community, fostering a stronger, healthier environment where families feel supported and confident in the care available to their children right here at home!"*

KidPrograms within KidsABC address the challenges of distance to specialty care and limited resources. KidsABC emphasizes the importance of early intervention in achieving positive outcomes. Children's provided specialized pediatric clinical guidance to launch and sustain these programs.



CMH's Kid-Friendly Height Chart



CMH's Pediatric Equipment Wagon



## Clinch Memorial Hospital's Heroic Response to Hurricane Helene

In the wake of Hurricane Helene, Clinch Memorial Hospital emerged as a beacon of hope and resilience for the Clinch County community. As the only facility with an immediate backup generator, the hospital became a critical lifeline during the first chaotic days following the storm.

With power outages crippling the region, Clinch Memorial's cafeteria was the sole source of hot meals for many. Over the course of seven days, the hospital's dedicated staff served over 7,000 meals, ensuring that no one in the community went hungry. This monumental effort was made possible by the tireless work of the hospital employees and the generosity of numerous donors.

The hospital's ability to provide continuous support was bolstered by the incredible contributions from various donors. Essential supplies, food, and equipment poured in, enabling Clinch Memorial to maintain its operations and extend its services beyond medical care. Key donations included:

- Essential Supplies and Food
- Refrigerated Truck: A refrigerated truck was provided, ensuring that perishable food items remained fresh and safe for consumption.
- Portable Showers: Portable showers were set up, offering much-needed hygiene facilities for both the hospital staff and the community members.
- Water and Gasoline Tanks: Clinch Memorial sourced a water tank and a gasoline tank, which were crucial for keeping the hospital running and enabling employees to commute to and from work.

The response to Hurricane Helene showcased the strength and unity of the Clinch County community. The hospital not only provided medical care but also became a hub of sustenance and support, embodying the true spirit of community resilience.

As the region continues to recover, the story of Clinch Memorial Hospital's response to Hurricane Helene will be remembered as a testament to the unwavering dedication of healthcare workers and the generosity of a united community.





## PARAMEDICINE

*Home Based Healthcare Coming Soon*

### ABOUT OUR PARAMEDICINE PROGRAM

- The Community Paramedicine Program is completely voluntary
- Referrals are received from Primary Healthcare Providers, Patients, and Family Members
- Patients may also be identified by Case Managers at Clinch Memorial Hospital and contacted directly by Community Paramedicine Provider

#### Program Services:

- Healthcare Navigation
- Healthcare Advocacy
- In Home Assessment and Education
- Meeting Needs with Local Resources
- Medication Management and Education
- Prescription Delivery as Needed
- Primary Care Appointment Assistance
- Transportation Acquisition as Needed
- Mental Health post Emergency Department Follow Up

Contact Lee at (912) 520-2013 to enroll in the program.



### ABOUT OUR PARAMEDICINE EMPLOYEE, LEE LANE

Lee Lane is a proud graduate of Clinch County High School and went on to further his education at Wiregrass Technical College in Douglas, Georgia, where he earned his paramedicine certificate, and Savannah Technical College. Having worked as a paramedic for Gold Star for 15 years, he was able to fulfill his responsibilities as a member of Clinch County's 911 Ambulance Service. His desire to serve others keeps him motivated in all he does.

# COMMUNITY RELATIONS

## LOCAL SCHOOL SYSTEM



### Clinch Memorial and CNA Class Partnership

When the CCHS Nurse resigned last year, CCHS faced the challenge of finding a Registered Nurse to teach the CNA class. Previously, Clinch Memorial had hosted CNA students for the clinical portion of their training. In 2024, this partnership evolved further as CEO Angela Handley and CNO Kellie Register stepped in to teach the class. Beyond the regular curriculum, they enriched the students' experience with field trips to the CDC Museum and the Georgia Aquarium. This collaboration not only prepared students for potential careers at their local hospital but also led to several students being hired as interns, many of whom continue to work at CMH today!



### Clinch Memorial gives away 250+ book bags and school supplies to Clinch students

At Clinch Memorial's Back to School Bash, the hospital was able to give away over 250 book bags filled with school supplies. Local churches, the Clinch Sheriff's Office, BenCura Rehabilitation Services, and Unison Behavioral Health were among the local organizations that made this possible!



### Career Fair at Clinch County High

Clinch Memorial was excited to attend Clinch County High School's Career Fair in April! Many students were eager to learn more about the many career opportunities we have at CMH. Thank you Clinch County High School and Homerville Main Street for hosting this event!



### Clinch Memorial Scholarship

Each year, Clinch Memorial Hospital awards a \$1,000 scholarship to a graduating senior at Clinch County High School who plans to pursue an education in healthcare. This year's recipient was Kaedon Rodriguez. To apply, contact the CCHS Counselor or call (912) 470-2409.



# IN OUR DNA

## COMMUNITY RELATIONS

### **BEYOND THE PATIENT EXAM,**

what does it mean to connect with our community? Angela Ammons, Chief Executive Officer, knows that outreach at a grassroots level is key. "Instead of asking the community to come to our facility, we found that our efforts are more effective by taking our services to the community," she says. "We are visible at community events because our community needs to know that we are here, around every corner."



### **Community Education Sessions**

Since 2022, Clinch Memorial Hospital has offered Community Education Sessions to educate the community on prevalent health and wellness issues. Topics range from Hypertension, Safe Exercising for Older Adults, Exploring Medicare, and more! The classes are taught in the hospital cafeteria on the first Tuesday of the month. A light meal is included!

### **Hands on Homerville**

In September, the community gathered to put our 'Hands on Homerville' while we dedicated the morning to cleaning up the town! The CMH team was designated picking up litter. Special thanks to Laura Nipper from Homerville Main Street and Pastor Joseph Carter from Homerville United Methodist Church for planning this awesome event!

### **Men's Health Day at Gospel Tabernacle**

Men's health is a crucial aspect of community wellness! Clinch Memorial Hospital was honored to join Gospel Tabernacle's Men's Health Education Day in June. Tony Walsh had the privilege of speaking at Gospel Tabernacle Church, emphasizing the importance of health screenings, when to speak to a provider, and other key information for men to be proactive when it comes to their health.

# IN OUR DNA

## COMMUNITY RELATIONS



### **Clinch Memorial gives away 250+ book bags and school supplies to Clinch students**

At Clinch Memorial's Back to School Bash, the hospital was able to give away over 250 book bags filled with school supplies. Local churches, the Clinch Sheriff's Office, BenCura Rehabilitation Services, and Unison Behavioral Health were among the local organizations that made this possible!



### **Clinch Memorial and local businesses purchase AED for Fargo Fire Department**

After purchasing an AED for the Argyle Fire Department in 2023, Clinch Memorial, Conner Holdings, Greif, and Mauser purchased the Fargo Fire Department an AED. The AED will allow emergency responders in Fargo to access life-saving equipment in a timely manner.



### **Community Trunk or Treat**

Clinch Memorial Hospital planned to host its 7th Annual Trunk or Treat this year. However, Hurricane Helene had other plans! For everyone's safety, the City of Homerville hosted a Trunk or Treat for everyone to attend or pass out candy due to the debris still in local neighborhoods. Our team had a great time at the community Trunk or Treat! We look forward to our biggest Trunk or Treat yet in 2025!



### **Clinch Memorial Christmas**

In 2022, Clinch Memorial Hospital kicked off its first annual "Clinch Memorial Christmas." During the month of December, each department's hand painted Christmas Cards and Christmas decorations are on display for the community to enjoy. This year, our staff did not disappoint with another beautiful holiday attraction!

# RURAL HOSPITAL *Stabilization Grant*

Clinch Memorial Hospital was among eight rural hospitals to receive the Rural Hospital Stabilization Grant (RHSG) from the Georgia State Office of Rural Health. This highly competitive grant aims to maintain and protect fragile rural hospital infrastructure. In 2024, the \$875,000 grant funded the following equipment and projects:

- Purchased a new X-Ray System
  - The new system supports up to 650 lbs. instead of 450 lbs. and offers lower doses of radiation with increased image clarity.
- Purchased ten new hospital beds
  - CMH replaced ten patient beds that had met their life expectancy, eliminating repair costs and supporting high-quality patient care.
- Fund a Patient Healing Garden
  - Grant dollars helped build a courtyard, allowing patients that selected CMH for their rehabilitation journey to receive natural sunlight, take part in physical therapy outdoors and visit with families in a natural environment. You can still purchase a brick paver from the CMH Foundation to name in your honor or in honor or memory of a loved one!
- Replace the roof on the Clinch County Health Department (CCHD) Building
  - With funding, CMH leveraged the Hub and Spoke Model framework to address the immediate needs of the CCHD. This included the replacement of the roof on their facility, ensuring CCHD can continue offering OB-GYN services to women in the region, and freeing CCHD dollars to expand their market share.
- Funded technology upgrades and recruitment efforts
- Paid off a Small Business Administration (SBA) Loan from COVID-19 Pandemic



## Patient Healing Garden

The Patient Healing Garden at Clinch Memorial Hospital is a specially designed outdoor space dedicated to enhancing the physical and emotional well-being of our patients. This innovative garden provides a safe, open-air environment for physical and occupational therapy, promoting recovery in a serene and natural setting.

### Key Features:

- **Wheelchair-Accessible Pathways:** Our garden includes smooth, wide pathways that are fully accessible, ensuring that all patients, regardless of mobility level, can navigate the space comfortably and safely.
- **Therapeutic Sensory Pathways:** Experience the benefits of varied textures underfoot with our sensory pathways, designed to improve balance and coordination. These pathways include pebbles, stepping stones, and other materials that stimulate the senses.
- **Shaded Seating Areas:** Relax and rejuvenate in our shaded seating areas, perfect for resting between therapy sessions or enjoying the tranquility of the garden.
- **Therapeutic Gardening Plots:** Engage in hands-on gardening activities such as planting and watering. These tasks help develop fine motor skills, hand-eye coordination, and muscle strength.
- **Functional Exercise Stations:** The garden is equipped with stations for functional exercises that mimic daily living activities, such as reaching, bending, lifting, and carrying objects. These exercises are designed to improve patients' ability to perform everyday tasks independently.

You can be part of our Healing Garden experience! Purchase a brick paver to permanently honor yourself or a loved one at Clinch Memorial Hospital. Brick Pavers range from \$100 - \$1,000. Email [lblitch@clinchmh.org](mailto:lblitch@clinchmh.org) or call (912) 470-2401 for more information.



*Patient Healing Garden  
Rendering*



*New X-Ray  
Equipment*



*Construction on  
CCHD Roof*



# CLINCH MEMORIAL FOUNDATION 2024 Highlights

The Clinch Memorial Foundation was established to support CMH with the purchase of equipment, essential supplies, and new service lines, ensuring the most quality healthcare is provided to the community for future generations. The Clinch Memorial Foundation welcomes corporate, professional, and individual support to further the mission and vision of the hospital. Giving opportunities include unrestricted annual gifts, gifts of stock, real estate or personal property. The Foundation was revitalized in 2022 and had a strong year in 2024.



## 2024 Cowboy Ball

The Foundation's Annual Gift Committee (pictured to the left) hosted a "Cowboy Ball" inviting the community to purchase tickets for a night of square dancing and great tunes played by Hatton Still Band! Through sponsorships and ticket sales, the Foundation raised over \$10,000 to purchase new technology at CMH! Stay tuned for ticket sales for next year's event fundraiser!

## Foundation Furnishes Activities of Daily Living (ADL) Room

The ADL Room is a fully equipped mock apartment that simulates a real-life home environment. This space is meticulously designed to help patients practice and master the essential activities of daily living in a safe and controlled setting. Whether you are recovering from surgery, managing a chronic condition, or working through rehabilitation, the ADL Room offers a practical and supportive environment to enhance your recovery journey.



## Clinch Memorial Foundation Brick Paver Sale

The Clinch Memorial Foundation raised over \$35,000 to upgrade equipment and enhance technology at Clinch Memorial Hospital through the sale of brick pavers. The brick pavers have been installed in Clinch Memorial Hospital's new Patient Healing Garden. For more information, review page 17.

# GEORGIA HAS A HEART FOR CLINCH MEMORIAL HOSPITAL

Since its inception in 2017, Clinch Memorial has received \$3,087,286 from generous Georgians who donated to the HEART program, a rural hospital tax credit. This opportunity is made available through legislation that enables Georgia taxpayers to receive a state income tax credit for 100% of the amount they contribute to qualified hospital organizations. These funds are then re-invested into the facilities to enhance patient access and care.

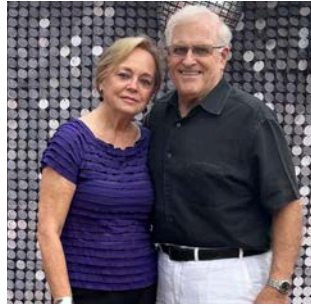
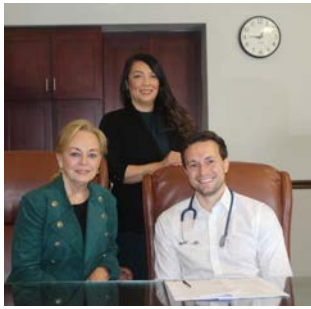
For more information on Georgia HEART, or how you can be a part of helping our rural hospitals, call Lily Blitch, Foundation Director, at Clinch Memorial Hospital. This cost you nothing as you must pay state taxes anyway! Simply redirect your taxes from the state to Clinch Memorial Hospital and keep those tax dollars in Clinch County!

## 2024 GEORGIA HEART PARTICIPANTS... THANK YOU!

Allied Claims Administration	Dr. Allen Lee	Jeffery Sprecher & Kelly Loeffler
Alma Telecom	David Mackay	Jim & Nancy Strickland*
Ameris Bank	Victor & Katherine Manabat*	Mark & Shelly Studebaker*
Angela & Allen Handley*	Phil & Ellice Martin	Susan S Swader CPA PC
Dr. Igor & Helene Ancor*	Jeremy McKinley	Christopher & Stefanie Swain*
George & Judith Beasley	Heather Minshew*	Larry Taylor
Dustin & Katie Bennett*	Danny & Sonya Mixon*	The First Bank
William & Elizabeth Beverley*	Troy & Kimberly Moore*	Quanna Tolbert
Chase & Lily Blitch*	Christy Moseley*	Dr. Cameron Wright MD
Jeff & Susie Brown	Marsha Nelson*	LLC
Keith & Betty Bryant*	Heather Peebles*	Jo Ellen Walker*
Louis & Luanne Cassotta	William & Cindy Pegg	Juanita Walker*
Dr. Sam Cobarrubias	Pierce Holdings	Tony & Jackie Walsh*
Betty Coleman*	Plastic Surgery Associates of Valdosta	Randy & Pam Williams*
Anne Davenport	Mark Pleasants & Sonya Merriman	Dr. Wayne & Dawn Wright
Zane & Darby Dixon*	Johnny & Madison Pope*	Yancey Bros. Co.
Phil & Ellen Dowd*	Jonathan Ramirez*	Randy & Debra Yonz
Brian Galison	Kim Ratliff*	
Greif Inc.	Derek & Kellie Register*	
Bonnie Helget	Matt & Sheila Rogers*	
Jeff & Cathy Helms	James & Kate Rowe*	
Eric & Stacie Hendrix*	Ben & Kate Saylor	
Derek & Stephanie Herlocker	Michael & Stephanie Scribner	
Gayle Hughes	Kaycee Sirmans*	
George Johnson*	Christine Smith*	
Ben & Natalie Jones	Erick & Jami Lee Smith*	
Austin & Allison Kline*	Lori Smith*	
Daniel & Vanessa Kuder	Southland Medical Group	
James & Cheryl Laine		
Jonathan & Lisa Landrum		
Robert & Denise Lee*		
Jerry & Paulette Littleton*		
Shalonda Lowe*		

\* Marks employee donors.

\$811,547 IN 2024 GEORGIA HEART DONATIONS



**THANK YOU  
THANK YOU  
THANK YOU**

**On behalf of the Clinch Memorial Hospital staff,** we would like to thank each of our community members for supporting CMH. With this 2024 Annual Report, we hope you have a better understanding of the services we provide, opportunities to support us, and the positive economic and community impact your hospital has on Clinch County! We are proud to serve this community with the best healthcare services right here at HOME!

## *In Memory of Dr. Ellice Martin*

While 2024 brought exciting opportunities and advancements at Clinch Memorial Hospital, it also brought a profound loss to our hospital family and the Clinch County community. This summer, we mourned the passing of Dr. Ellice Martin, Chair of the Clinch County Hospital Authority Board. Dr. Martin dedicated her life to leadership, community service, and excellence.

Dr. Martin served on the Hospital Authority Board for six years, with three of those years as Chairman. Her leadership was instrumental in sustaining the financial operations of our hospital, expanding services to Fargo, opening an in-house pharmacy, and enhancing the health and well-being of Clinch County citizens. At every monthly board meeting, she consistently inquired about “the state of the health of Clinch County” from our Chief Medical Officer.

Beyond her board duties, Dr. Martin was a steadfast supporter of Clinch Memorial Hospital. She was a passionate advocate, always sharing our success stories and unique service lines. Our team could always count on her to rally the ladies at HUMC to provide sweet treats to our staff in times of need. She was particularly enthusiastic about supporting Clinch Memorial Foundation’s fundraising events, often being the first to invite attendees to join her on the dance floor at our Disco in DuPont and Cowboy Ball!

Three years ago, Dr. Martin proposed the creation of an Annual Report to keep Clinch County residents informed about the good work happening at their local hospital. We will continue publishing this report, honoring her vision. Dr. Martin’s attention to detail, passion for healthcare, and dedication to the community are remembered and cherished by her colleagues, friends, and family.



**WE WANT TO  
HEAR FROM YOU!**

### **Tell us what you think about Clinch Memorial Hospital!**

Please help Clinch Memorial Hospital and our community by taking this Community Health Needs Assessment (CHNA) survey. The CHNA gives us comprehensive information about the community’s current health status, needs, and issues. This information can help develop a community health improvement plan by justifying how and where resources should be allocated to best meet community needs. Scan the QR code above to access the survey. If you would like a physical copy, please contact our Public Relations Director at (912) 470-2401.